

AutoMate Corporation



Cadmandu® SecureCAD Edition

Secure Project File Management and Viewing for Engineering Environments

Secure Document Management

Cadmandu *SecureCAD* Edition is AutoMate's state-of-the-art solution for managing and viewing documents in a truly secure environment. Finally, you can secure your corporate design files and data assets in a cost-effective, managed environment.

Your files always remain in their native format, in traditional server directory folders, secured by your network permissions and privileges. Typically, these folders would not be available to anyone but designated administrators. Cadmandu's *SecureCAD* technology allows designated users access to these files and documents even though they cannot *browse* the network to find them!

Rapid Integration

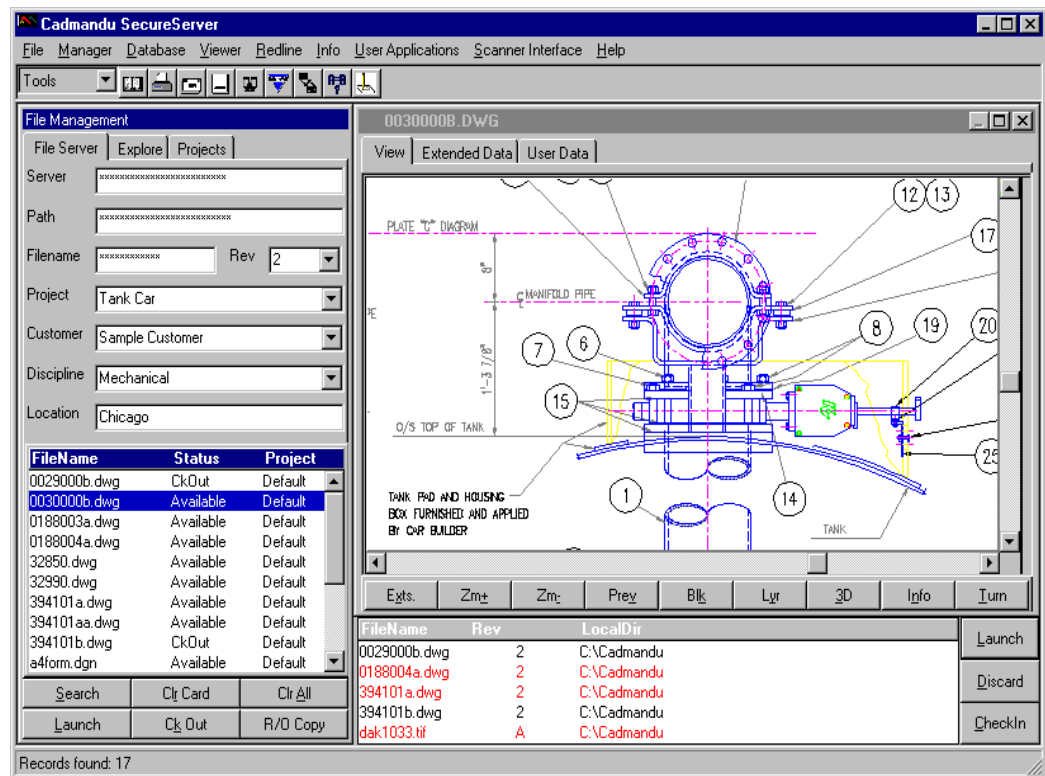
Cadmandu's intuitive design makes it easy for new users to master basic operations in just a matter of minutes. Setup and configuration is fully automated and designed for flexibility.

Easy to Administer

Cadmandu is easy to install and administer. Detailed implementation instructions get you up and running in less than a day. Or you can choose AutoMate's optional on-site implementation services where we install and configure the program and train your users and administrative staff over a two-day period.

How *SecureCAD* Works

Cadmandu's *SecureCAD* component is an integrated function that is enabled when a request is made to retrieve or place a file. Since the file folders are ordinarily not accessible by the user, *SecureCAD* takes over, with the ability to login to your network as a special or designated user with the required access privileges. Once the file transfer is complete, the *SecureCAD* function log's itself out and waits for the next request.



Worldwide Satisfaction

With preferred software solutions and first-rate, direct-to-customer support, AutoMate has satisfied the file management needs of tens of thousands of users worldwide. No provider in the industry sets higher standards of customer satisfaction.

AUTOMATE CORPORATION
Phone: 847-676-4636

9027 SLEEPING BEAR ROAD
FAX: 847-676-4699

SKOKIE, ILLINOIS 60076 USA
E-MAIL: sales@automate.net

CADMANDU AND CADMANVIEW ARE REGISTERED TRADEMARKS OF AUTOMATE CORPORATION

Cadmandu® *SecureCAD* Features & Specifications

File Management Features

- 32 bit Windows Compliant
- Application Launch
- Audit Trail - History Log
- AutoCAD® Block Insert (automatic)
- Browsing and Wildcards
- Concurrent Use Licensing
- Customizable Database, Fields & Labels
- DGN Tag & Reference File Management
- Display of Latest Revision
- Document Security Levels
- DWG Attribute Management
- Externalized Text for Custom Configuration
- File Check-In & Check-Out
- File Revision Control
- Import and Export Utilities
- Integrated TWAIN Compliant Scanning
- Messaging (e-mail)
- Microsoft™ Access database included (default)
- Multiple File Locations
- Multiple File Search Methods
- Multiple User Security Levels
- Preview/View/Import
- Project and Group Management
- QBE (query by example) Searching
- Read Only (Scratch) CheckOut
- Relational Database Design
- Remote Location Check-in/Check-out
- Revision Control
- Server Based Installation
- User level Password Protection
- Workflow/Routing Features
- Y2K Compliant
- *and more...*

File Viewing Features

- 3D Viewing
- Batch Mode Printing/Plotting
- Block Viewing and Attributes
- Compare Files
- Cut & Paste to clipboard & Office Apps.
- DGN Reference File and DWG XREF support
- File Conversion/Export (supports batch mode)
- Format Conversion and Export
- Full Screen Viewing
- Integrated Redlining
- Multiple Viewing Windows
- Printing and Plotting to Windows Devices
- Redline with export capabilities
- Stored and Saved Views
- *and more...*

Viewing Formats

200+ formats, including: DWG, DGN, DXF, SLD, HPGL, CALS G4, CCITT G3/G4, BMP, WMF, PCX, PRT, TIFF, RLC, RLE, TGA and most word processors, spreadsheets, graphic and presentation formats and database tables.

Configuration Modes / Options

- *DEI* - Data Exchange Interface - Bi-directional AutoCAD attribute and MicroStation text-tag insertion and extraction. Base CAD application not required!
- Optional Project Management Module
- ODBC Database Connectivity
- Optional Annual Update/Maintenance/Support

Other AutoMate Products

Cadmandu v.6 TPM – AutoMate's foundation Engineering Document Management application for all but the most demanding security conscious environments.

CadmanView – contains popular Cadmandu file management and viewing functionality, but without file checkout & checkin. Also available in *SecureCAD* Edition.

SmartBLK Pro – A block-attribute/text-tag utility for AutoCAD and Microstation files. Allows searching, extraction (exporting) and manipulation of the attribute and tag data.

Requirements

Server

- Any accessible network file/database server
- 32MB disk space (for Cadmandu files)

Workstation

- 32 bit Windows 9x, NT 4.0, 2000
- 32MB RAM memory (minimum)
- *TCP/IP* network service or *lmhosts* support.
- Sufficient disk space for checked out file storage